

101 Georgia Avenue, West Didsbury, Manchester, M20 1LY



JP&Brimelow
ESTATE AGENTS

Offers In The Region Of £375,000


 3  2  1  C

VIDEO TOUR AVAILABLE A well-presented & delightful, THREE DOUBLE BEDROOM, townhouse situated in a highly sought-after location here in West Didsbury. Located within walking distance to Burton Road with its stylish shops, independent restaurants and bars as well as excellent transport links to both Manchester City and Manchester International airport. In brief this modern property comprises; an entrance hallway which has access into the garage, a study to the rear aspect with patio door allowing access out into the rear garden and a three-piece shower room to the ground floor. To the first floor there is a landing are two good sized bedrooms one benefitting from built in storage and a balcony. A white four-piece bathroom suite completes this floor. To the second floor there is a large, modern open plan fully fitted kitchen and large useful storage cupboard which completes this fabulous home. The property benefits from gas fired central heating, high ceilings, a driveway providing off road parking, a large useful garage and a rear enclosed garden. OFFERED WITH NO VENDOR CHAIN.



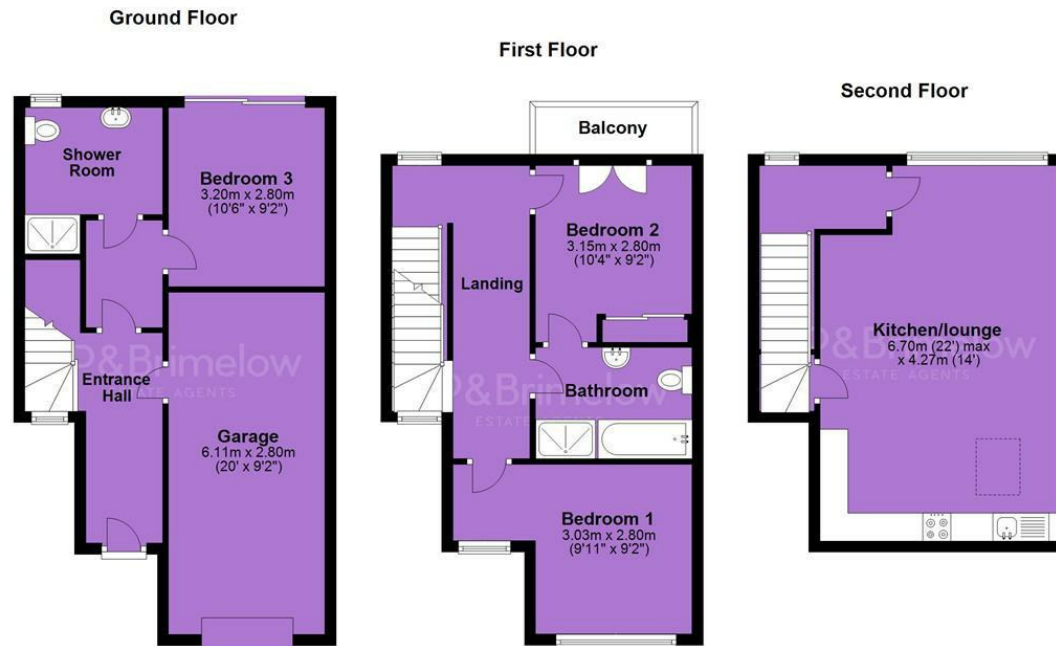


EPC Chart

Energy Efficiency Rating		
	Current	Potential
Very energy efficient - lower running costs		
(92 plus) A		86
(81-91) B	73	
(69-80) C		
(55-68) D		
(39-54) E		
(21-38) F		
(1-20) G		
Not energy efficient - higher running costs		
England & Wales	EU Directive 2002/91/EC 	



Tenure: **Freehold** Council Tax Band: **E**



JP & Brimelow Estate Agents Ltd
430 Barlow Moor Road, Manchester, M21 8AD
Tel: 0161 8822233

E: sales@jpbrimelow.co.uk www.jpandbrimelow.co.uk



JP & Brimelow
ESTATE AGENTS

NOTICE: JP & Brimelow Estate Agents Ltd for themselves and for the vendors or lessors of this property whose agents they are give notice that:

- (i) the particulars are set out as a general outline only for the guidance of intending purchasers or lessees, and do not constitute, nor constitute part of, an offer or contract;
- (ii) all descriptions, dimensions, references to the condition and necessary permissions for use and occupation, and other details are given in good faith and are believed to be correct but any intending purchasers or tenants should not rely on them as statements or representations of fact but must satisfy themselves by inspection or otherwise as to the correctness of each of them;
- (iii) no person in the employment of JP & Brimelow Estate Agents Ltd has any authority to make or give any representation or warranty whatever in relation to this property.

jpandbrimelowestateagents

@jpandbrimelow